

NESS XC League – Harwich Runners



Harwich Runners are pleased to be hosting the final 2025/2026 fixture of the NESS Cross Country League on Sunday 22nd February 2026.

Please be aware the start location has moved along the road from previous years. The majority of parking has moved too.

Location	Dengewell Hall, Clacton Road, Manningtree CO11 2RU . Race HQ will be in the Finish field behind Dengewell Hall. Team rendezvous/Gazebos will be in this field too.
Special notes	<p>Due to the nature of the venue as working farmland there are a few important considerations. Please observe these rules and respect this private facility, thank you.</p> <ul style="list-style-type: none">• STRICTLY NO DOGS on any part of the venue.• NO ACCESS before race day. It will not be possible for any pre-race recces.• NO RUBBISH to be discarded. Please take rubbish home with you or use bins provided.• CAR SHARE – We are limited to approximately 140 off-road car spaces as it stands.• HEAVY, SOFT and WET under foot on arable farmland and long grass. About 1km total of roughly gravelled track. Spikes are suitable.• WELLY BOOTS are highly recommended for the walk to Race Start.
Parking	<p>Please follow the marshals' directions on arrival at Wix.</p> <p>An additional page of parking details follows the Route Maps.</p> <p>The Car parks closes at 13:00 prompt. Do not wander off and risk getting locked in. ☹️</p>
Toilets and Amenities	<p>Chemical toilets will be available in the carpark.</p> <p>There are no changing or shower facilities available.</p> <p>Runners are advised to leave non-essentials in their cars.</p>
The Races	<p>Junior fun run will start at 10:00 and will be 1 mile in distance.</p> <p>Senior race will start at 10:45 and has is 5 miles/8km.</p> <p>Both races will be entirely on private land except for a couple of short stretches in the senior race which traverses public rights of way. Please be respectful to ramblers on these parts of the course.</p>
Race Fees	<p>Fees for each club will be confirmed alongside the results and will be £5 per senior runner (juniors run for free).</p> <p>Payment by bank transfer as follows:</p> <p>Account name = North Essex and Suffolk Cross Country League</p> <p>Reference = your club's name</p> <p>Account number = 60695760, Sort Code 30-99-50.</p>
Race results	<p>Hand in Finishers sheets to the HQ / gazebo near the finish line.</p> <p>Please be prompt with returning results and finishers position tags.</p> <p>Results will be announced as soon after the race as possible.</p>
Refreshments	There will be no refreshments provided on the day.

We look forward to seeing you all and thank you for your helping to make this a fun and successful event.

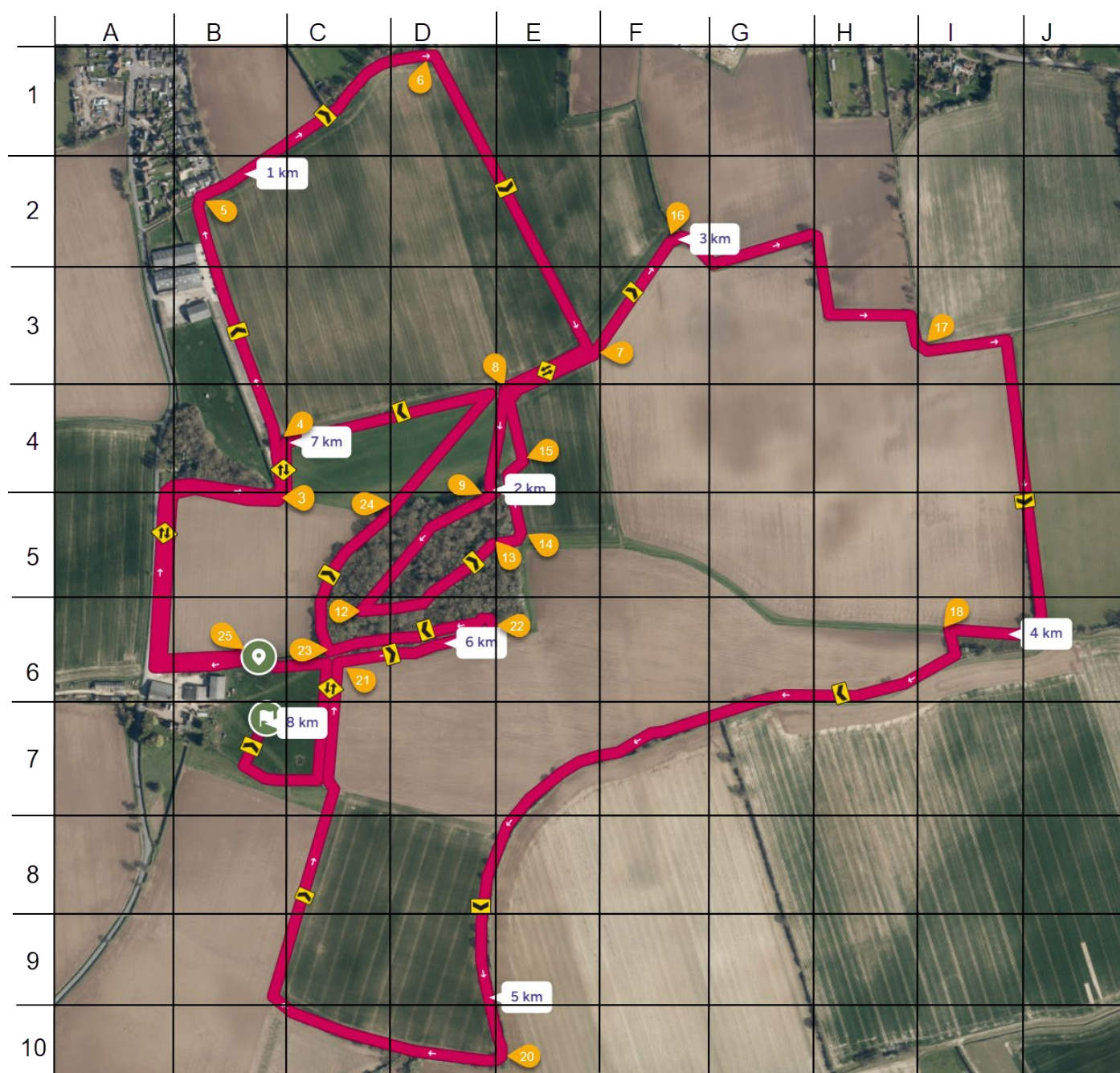
NESS XC League – Harwich Runners



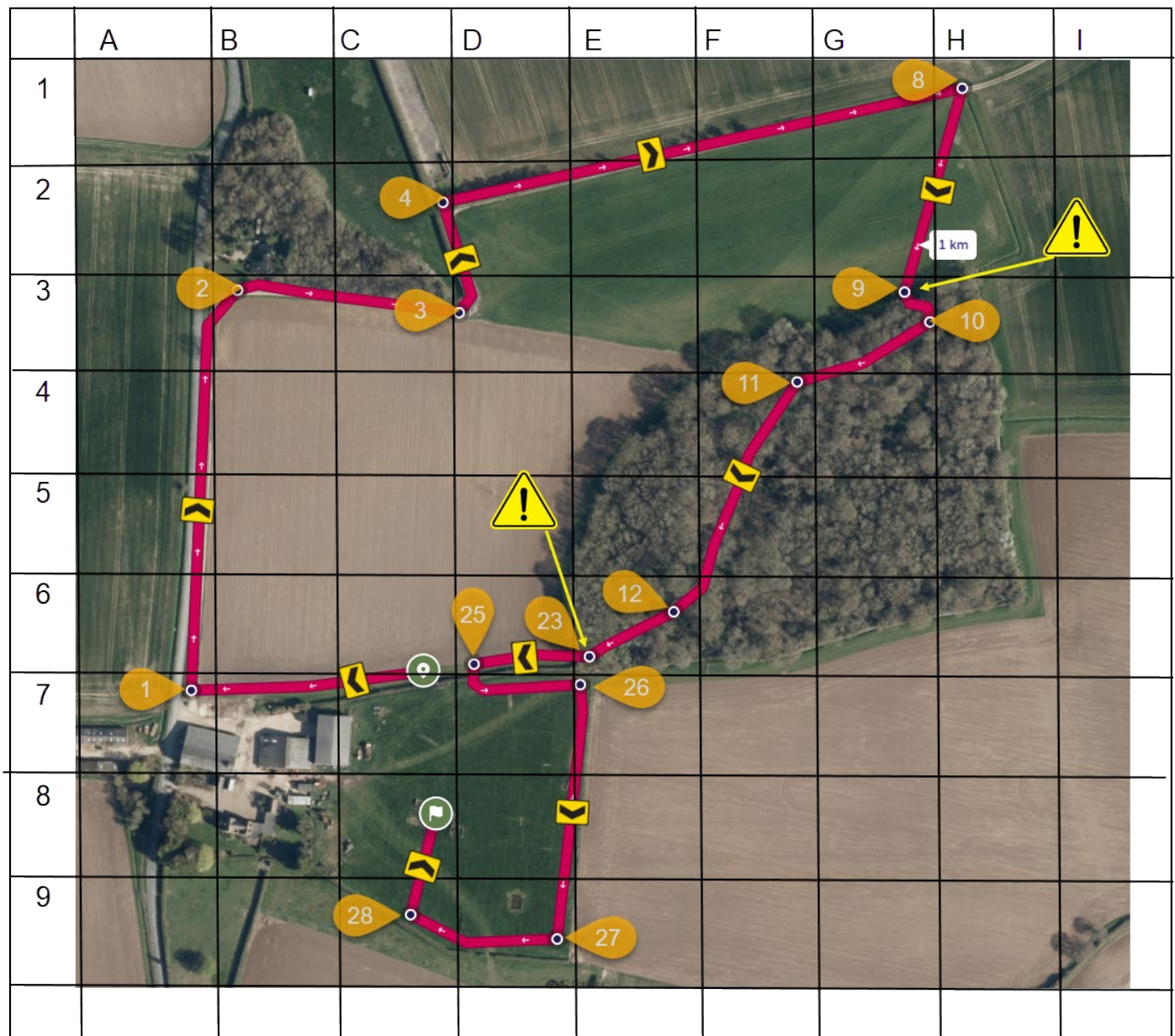
Senior Route

The course is a flat one lap route across predominantly rugged terrain. There is some variety including ditch jumps, wooden footbridges and woodland trail. Expect challenging and knobbly ground around many of the ploughed field edges due to the exceptionally wet weather of the last few weeks. There are a few faster easy-going stretches but for a lot of the course passing opportunities are limited.

Please pay close attention to course markers and marshals for direction and no cutting corners.



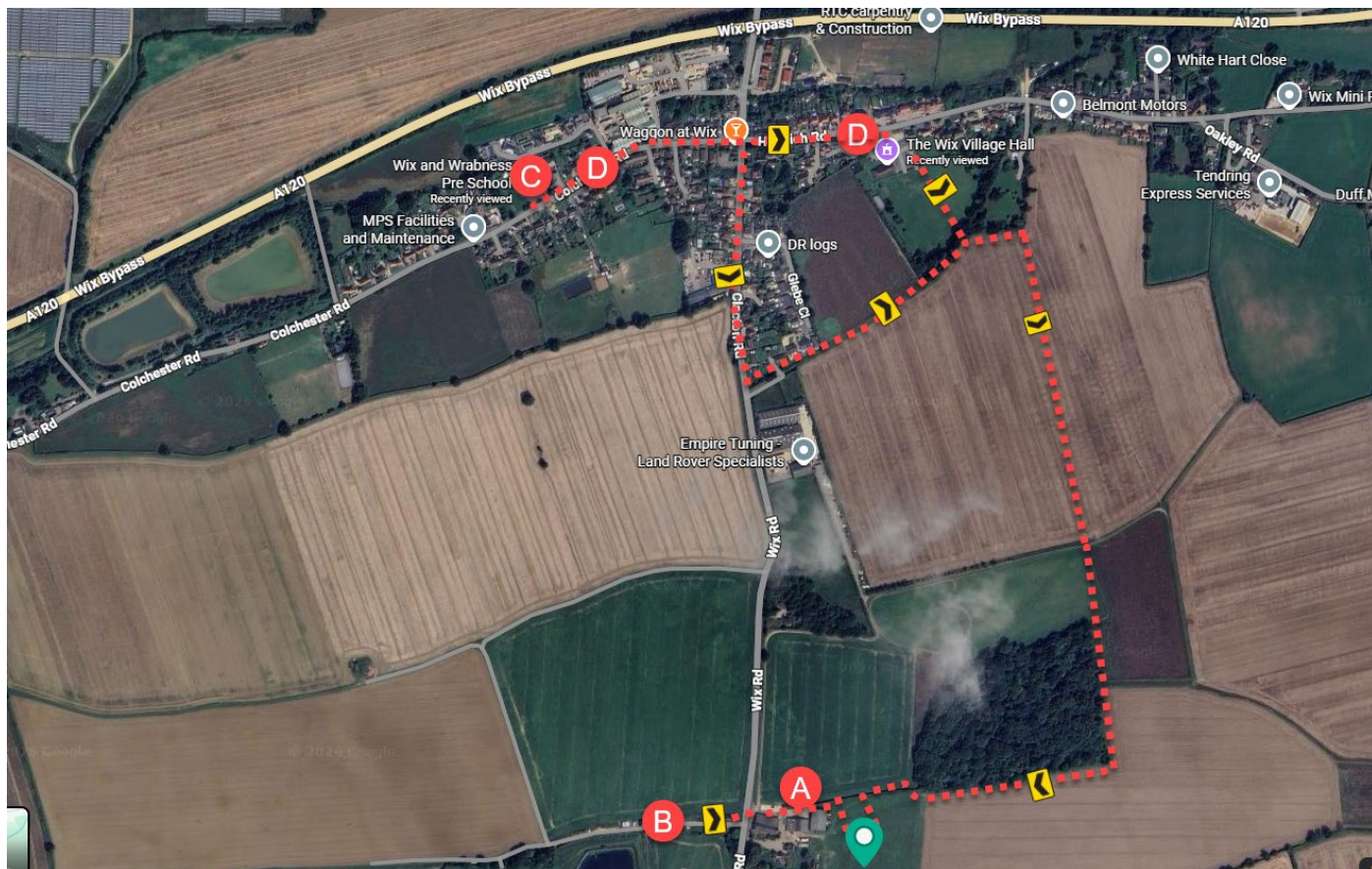
The junior route will start and finish in the same place as the senior race and will include a single trail through Dengewell Wood. Marshals will provide support at the crossing points into and out of the wood. Spectators will have a plenty of space in the finishing field.



NESS XC League – Harwich Runners



Car Parking



Clacton/Wix Road should not be used for parking. It is a 60mph zone and not wide enough to allow unimpeded two-way traffic flow if parking here.

For parking in the areas C and D, the directions to Start are shown in red above. The walk is between **1.5 and 2km**.

The recommended safe walking route is via the Wix Village Hall, entrance shown here. →

///diner.shrub.stumble

Walk through Village Hall car park, cross the playing field to far side and walk through gap in hedge.

You will then join footpath as marked in map above. It is on Farmland so Wellies are best!

You could walk up Clacton Road but there is a short stretch of this main road with no pavement so it is not recommended. If you do go this way turn left at footpath sign.

///dumpy.inflation.records

(Note, no parking available at Wix Village Hall. Venue hired to another party.)



NESS XC League – Harwich Runners



A – Parking at Dengewell Hall – Approx 70 spaces. For Juniors and those with Gazebos to move. This is on the same side of the main Wix/Clacton Road as the event itself. Emergency Access required at all times.

///[woes.prove.crispier](#)

Old photo - this entrance is now gated!

Latecomers - there may be spaces after the Juniors race has finished and some have departed, but don't count on it!.



B – Parking opposite Dengewell Hall – Approx 30 spaces. For visiting Senior runners. This is a farm track. Consider that parking is likely to be first in, last out on Exit, due to width restrictions.

///[birdcage.relay.famines](#)

Old photo - this entrance is now gated!



C – Wix & Wrabness Pre-School – Approx 25-30 spaces.

For visiting Senior runners. Concrete car park.



D – Wix Village.

There is some street parking available here. Please park with consideration for the locals.

